

# DISTINGUISHED RURAL SOCIOLOGIST



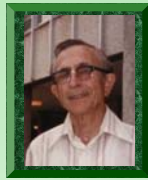
1981  
Howard W. Beers



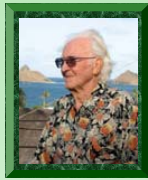
1981  
M. E. John



1981  
Charles P. Loomis



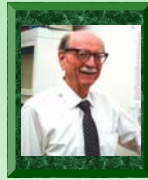
1981  
Eugene A. Wilkening



1982  
George Beal



1982  
Alvin Bertrand



1983  
Calvin L. Beale



1983  
Harold Kaufman



1982  
Herbert Lionberger



1983  
Selz Mayo



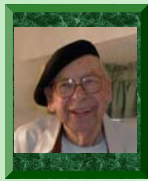
1983  
Edward O. Moe



1983  
William Sewell



1984  
Gladys Bowles



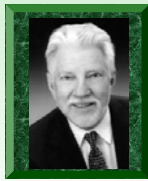
1985  
Olaf F. Larson



1985  
W. Keith Warner



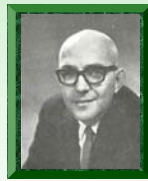
1986  
Paul J. Jehlik



1986  
Everett M. Rogers



1997  
Glenn V. Fuguitt



1988  
Robert C. Bealer



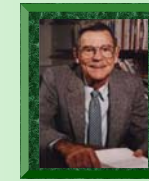
1988  
J. Allan Beegle



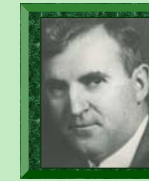
1988  
A. Lee Coleman



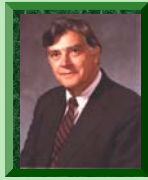
1988  
Frederick C. Fliegel



1989  
Thomas R. Ford



1989  
Douglas Enminger



1990  
Archibald Haller



1990  
Denton Morrison



1990  
Harry K. Schwarzweiler



1991  
James H. Copp



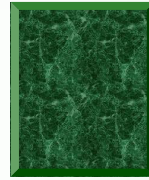
1991  
A. R. (Ray) Mangus



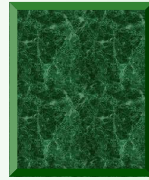
1991  
Conrad R. Taeuber



1992  
William R. Burch Jr.



1992  
Louis A. Ploch



1993  
Boguslaw Galeski



1993  
William L. Flinn



1993  
Irwin T. Sanders



1994  
Daryl J. Hobbs



1994  
Kenneth P. Wilkinson



1995  
Janet Fitchen



1995  
Frank Young



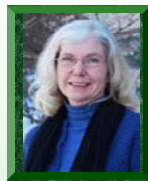
1996  
Rabel J. Burdge



1997  
Paul and Francena Miller



1998  
Fern K. (Bunny)  
Willits



1998  
Cornelia (Neal) Butler Flora



1999  
Jerry W. Robinson



1999  
Gene Summers



2000  
William D. Heffernan



2001  
William W. Falk



2002  
Doris Slesinger



2003  
Donald R. Field



2004  
Frederick H. Buttel



2005  
Ann Tickamyer



2006  
George and Nancy Axinn



2006  
Shannon Stokes



2007  
Thomas Lyson



2008  
Don A. Dillman



2008  
Steve Murdock



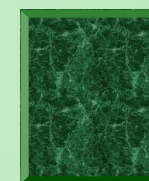
2009  
Robert Moxley



2010  
Ronald C. Wimberley



2011  
Jim Christenson



2012  
\_?\_?\_