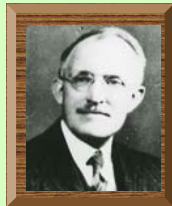


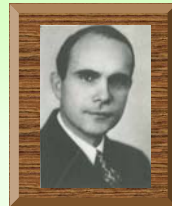
THE SECTION ON RURAL SOCIOLOGY (of the American Sociological Society)



1922
Dwight Sanderson



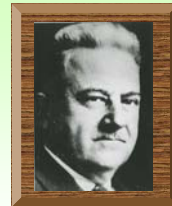
1923
Carl C. Taylor



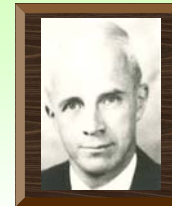
1924
John H. Kolb



1925
C. E. Lively



1926
E. L. Morgan



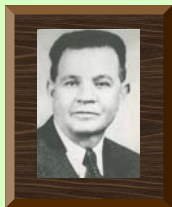
1927
E. L. Kirkpatrick



1928
Eben Mumford



1929
B. F. Coen



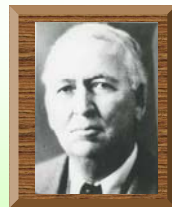
1930
W. A. Anderson



1931
Theodore B. Manny



1932
Edmund deS. Brunner



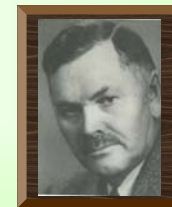
1933
Carle C. Zimmerman



1934
Fred C. Frey



1935
B. L. Hummel



1936
Lowry Nelson



1937
George H. Von Tungeln

1902-1907

Informal meetings of persons interested in the social organization of rural life begin during Conferences on Rural Progress and other meetings

1905

American Sociological Society (ASS) formed as organization separate from the American Economics Association

1908

President Roosevelt forms the Country Life Commission

Kenyon Butterfield presents first rural themed paper at the American Sociological Society

1913

Informal meeting of rural sociologists reported in ASS conference proceedings

Dec, 1915

John M. Gillette organizes meeting of rural sociologists during ASS conference. Group meets with ASS President George E. Vincent.

Dec, 1916

American Sociological Society (ASS) conference theme is "The Sociology of Rural Life"

Dec, 1918

Rural sociologists' committee "Standardization of Rural Research" publishes report in the *American Journal of Sociology*

Dec, 1921

Request made to ASS Executive Committee to become an autonomous section

1922

First year as "Section on Rural Sociology" of the American Sociological Society

1924

Section recognized as oldest in ASS and "displaying remarkable vitality"

Section establishes standing committees on research, teaching, and extension

1925

Purnell Act. Purnell Conferences of Research Workers in Rural Sociology begin being held in conjunction with the ASS Section on Rural Sociology

Dec 1927

John M. Gillette is first rural sociologist to be president of the ASS.

Dec, 1928

ASS conference theme is "The Rural Community."

Section on Rural Sociology first considers forming an organization separate from the ASS

Dec, 1935

Section on Rural Sociology votes to establish the journal *Rural Sociology*

March, 1936

First issue of journal *Rural Sociology* is published by the ASS Section on Rural Sociology

Dec, 1937

Section on Rural Sociology members vote to accept an amended minority report and forms a professional association separate from the ASS: The Rural Sociological Society of America